

# EAST

AT BANORA



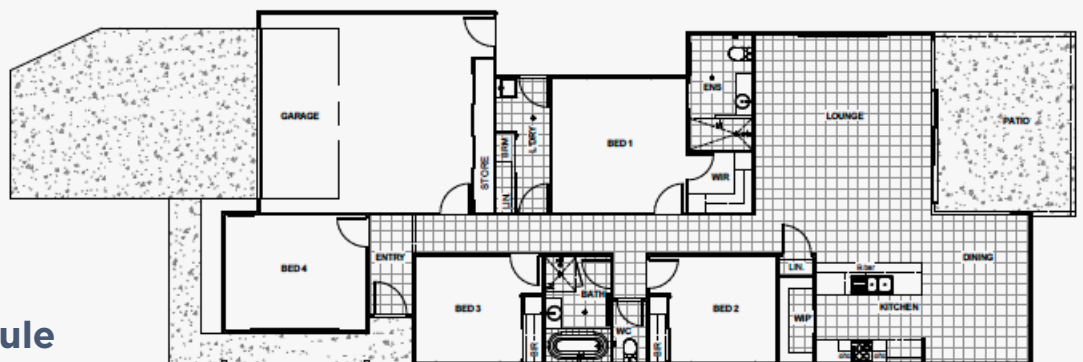
## Features

- 20 mm Quantum Quartz stone to Kitchen, Ensuite, Bathroom and Laundry
- Premium 900mm appliances
- LED Down lights to Entry, Kitchen, Meals and Family
- Seven Minimum 6 star or higher star energy rating
- Alfresco Dining
- Aggregate driveway and porch Square Set cornice to living areas

4  2  2  2 

House and Land Package

# \$670,000



## Area Schedule

|             |        |                |
|-------------|--------|----------------|
| Garage      | 38.23  | m <sup>2</sup> |
| Living      | 150.92 | m <sup>2</sup> |
| Patio       | 20.46  | m <sup>2</sup> |
| Porch       | 1.77   | m <sup>2</sup> |
| Grand Total | 211.37 | m <sup>2</sup> |

Note: If image shows Colorbond roof and render this is extra from standard. External lights are nonstandard. House illustration is an artist impression only. House size is only a guide, measurements may differ in actuality.

[eastatbanora.com.au](http://eastatbanora.com.au) or call **0444 57 362**